



LAMBDA THETA ALPHA  
— *foundation* —



LAMBDA THETA ALPHA  
— *foundation* —

Lambda Theta Alpha Foundation, Inc.  
[info@ltafoundation.org](mailto:info@ltafoundation.org)  
[ltafoundation.org](http://ltafoundation.org)

# ANNUAL REPORT 2021

Advancing Our Community

The Lambda Theta Alpha Foundation's Board of Directors govern the work of the Foundation. The Board shapes the Foundation's direction and ensures that the resources and efforts in place match the Foundation's mission to advance the community through scholarship, educational programming, and humanitarian relief.

## LETTER FROM THE PRESIDENT

Greetings!

There are not enough words to accurately describe the gratitude and pride we feel toward each supporter of the Lambda Theta Alpha Foundation. As we navigated another year in unprecedented times, we saw how resilient our communities and allies are as they took action to protect and provide assistance to one another.

The Foundation strategically focuses on advancing our communities through each of our pillars. This year, we were fortunate enough to provide 17 scholarships to students, including those completing courses virtually! Our educational programming pillar continued to provide COVID-19 prevention and mitigation resources while introducing an Op-Ed series and new webinar topics. For example, we collaborated with the California Latinas for Reproductive Justice, the University of Iowa, and the University of Illinois to provide a webinar describing the history, current injustices, and ways to take action related to Eugenics in our communities. The Foundation provided humanitarian relief through direct action grants to organizations assisting with the mental health impact of the pandemic on our communities, financial relief stipends to families in Texas during the Winter storms, and continued our annual distribution of hurricane relief stipends to those impacted by hurricanes.

While I am excited about how we collectively advanced our communities in 2021, I am in awe of our collective perseverance! On behalf of the Foundation Board, THANK YOU for staying strong and continuing to support us as we work tirelessly to advance our communities.



With Gratitude,  
Dr. Denise C. Vidot

## WHO WE ARE

### Advancing our Community

The mission of the Lambda Theta Alpha Foundation is to advance and promote enrichment of our communities through a pillared approach, specifically Educational Programming, Scholarship, and Humanitarian Relief. Our pillared approach provides an important framework ensuring we take a guided perspective to our efforts and priorities as a Foundation. We have designated these areas of priority based on our collective beliefs regarding the gaps that exist in service to the broader communities we target. The Educational Programming we deliver and support is prioritized to ensure we provide a resource to important challenges society is currently facing and also to highlight hidden issues that are disproportionately impacting our target communities. Given that educational barriers are the leading causes of inequities in social outcomes in the United States, our Scholarship Pillar is one of the hallmarks of the Foundation. Through our Scholarship Pillar, we contribute to the advancement of leaders in our community to highlight the significance of equitable access to education. And finally, given the rapid increase in humanitarian disasters across the globe which disproportionately impact vulnerable populations, we support the safety of our communities through our Humanitarian Relief efforts. These pillars are intertwined and highly reliant on each to other to ensure the Foundation's success. The year 2021 was the Foundation's year of "Advancing Our Community." We hope you will support us in the years to come as we continue to advance our communities.



## EDUCATIONAL PROGRAMMING

As the Foundation “Advanced our Communities” in 2021, the Foundation focused on urgent areas of educational need including educational inequities and barriers to students from marginalized communities, as well as the impact of the COVID-19 pandemic on the United States. Through this programming, we hoped to highlight areas disproportionately impacting the communities we serve and encourage a call for action for those of us privileged to support those in need.

In 2021, the Foundation invited opportunities for interested parties to submit an educational opinion piece on important topics impacting our communities in alignment with the Foundation’s pillars and mission framework. Our first educational opinion piece was submitted by Anna Mahle, the Senior Vice President of Public Partnerships at Teach For America where she leads the organization’s public policy work. Her important educational opinion piece was focused on the importance of education and how transforming our educational system is a matter of national security to ensure the US continues to be a leading force in the global economy as measured by the degree of equity, resiliency, and economic or social mobility. Our second educational opinion piece was submitted by Rosario Quiroz Villarreal who is a Director of Policy and Advocacy with TNTP. Her moving educational opinion piece highlighted the importance of advocating for immigrants and students to support their full potential and ensure equitable opportunity to thrive within our social environment.

Throughout 2021, the Foundation led several webinars focused on updating our communities on the current state of the COVID-19 pandemic. We provided educational back-

ground regarding the epidemiology of the pandemic both globally and the United States. We also provided periodic reminders regarding the importance of engaging in CDC-recommended preventive behaviors such as social distancing and quarantining after a suspected exposure. We focused on the importance of following recommended prevention measures, such as vaccination, particularly in the context of returning to college while the US made efforts towards returning to “normal.” As the pandemic continues to impact the globe, the Foundation will highlight the progress we have made towards controlling the spread of the disease and efforts we should make to continue to protect ourselves and our loved ones.

Through our webinar titled “History of Eugenics in Latinx Communities” we explored the history of eugenic sterilization in the United States, specifically in the context of Latinx communities. Our speakers included, Dr. Natalie Lira, an Assistant Professor in the Department of Latina/Latino Studies at the University of Illinois at Urbana-Champaign; Dr. Nicole Novak, an Assistant Research Scientist with the Prevention Research Center at the University of Iowa College of Public Health; and Ena Valladares, the Director of Programs of the California Latinas for Reproductive Justice. The speakers provided an engaging discussion regarding the historical significance of eugenics in our society, how it is utilized as a method of abuse and why, and in current day, how these abuses continue to exist in places such as detention centers across the US. The audience was left with resources to learn more and how to potentially contribute to the mission of organizations focused on highlighting this injustice in the US.

## HUMANITARIAN RELIEF

Humanitarian relief is a core pillar of the Foundation’s mission. This year, the Foundation focused on addressing the needs of the communities continuously impacted by the COVID-19 pandemic. In addition to providing updates on the epidemiology of the pandemic in the United States, ways to exercise important preventive behaviors to curb the spread of SARS-CoV-2, and the societal impacts of the pandemic on our communities, inline with our educational programming pillar, the Foundation provided stipends to those needing financial support due to being out of work as a result of COVID-19. The Foundation also sought to provide financial support to those in need of humanitarian assistance after natural disasters such as wildfires, earthquakes, tropical storms or hurricanes.

In early 2021, the North American winter storm, unofficially referred to as the Winter Storm Uri, was a major winter and ice storm that had widespread impacts across the United States. Over 9.9 million

people in the U.S. experienced blackouts, many of whom due to a major power crisis in Texas, which became the largest in the US since 2003. In Texas, the winter storm resulted in the worse energy infrastructure failure in Texas history leading to shortages of water, food, and heat. More than 4.5 million homes and businesses were left without power for several days. At least 246 people were killed directly or indirectly, with some estimates as high as 702 killed as a result of the crisis. In response to this crisis, the LTA Foundation mobilized and offered small stipends to deserving applicants to alleviate the negative financial impacts of the storm.

**The United States and the globe continue to be negatively impacted by the COVID-19 pandemic. In 2020, the Centers for Disease Control and Prevention estimated that COVID-19 was among the top three leading causes of death in the US, only following heart disease and cancer.**

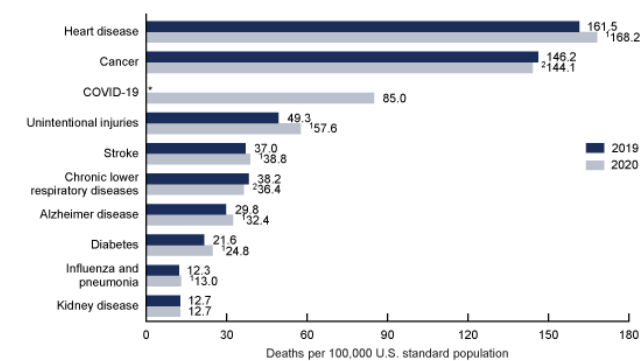
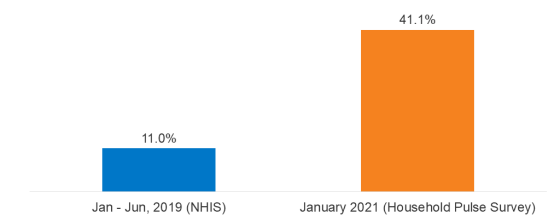


Figure 1

Average Share of Adults Reporting Symptoms of Anxiety Disorder and/or Depressive Disorder, January-June 2019 vs. January 2021



NOTES: Percentages are based on responses to the GAD-7 and PHQ-2 scales. Pulse findings (shown here for January 6 - 18, 2021) have been state overall since data collection began in April 2020.

SOURCE: NHIS Early Release Program and U.S. Census Bureau Household Pulse Survey. For more detail on methods, see <https://www.cdc.gov/nchs/data/nhris/earlyrelease/ERmentalhealth508.pdf>

**In addition to the overall burden on health outcomes, the pandemic has adversely impacted the mental health and overall quality of life of adults living in the US. As an example, below data summarizes the**

In support of these adverse impacts, the Foundation continued to financially support deserving applicants of support during the COVID-19 pandemic.

You can’t stop a tropical storm or hurricane, but you can take steps to protect yourself and your family. In the US, June marks the start of Hurricane season and ends in November. It’s always important to be prepared for a hurricane. This year, the LTA Foundation prioritized the development and provision of disaster preparedness resources to our communi-

ties. Planning for hurricane season and other potential disasters can be stressful, and during the coronavirus disease 2019 (COVID-19) pandemic, it may be especially so. Disaster planning was different this year because of the need to protect yourself and others from COVID-19. As the US continues to experience the impacts of climate change and the COVID-19 pandemic, the Foundation will continue to prioritize fundraising efforts as well as educational efforts to support the safety of the communities we serve.

# SCHOLARSHIP

According to the Education Data Initiative, 63% of bachelor's degree holders owe an average of \$31,790 in federal loans, 54% of master's degree holders owe an average of \$70,070 of federal loans, and 45% of doctoral degree recipients owe an average of \$118,360 in federal loans. Aside from federal student loan debt, the national private student loan balance exceeds \$140 billion (Education Data Initiative, 2022).

**During 2021, and the COVID-19 global pandemic, the federal student loan debt balance increased 2.9% after an increase of 8.28% in 2020 (Education Data Initiative, 2022).**

It is our mission to help chip away at the student loan debt balance by supporting scholars through our foundation's scholarship pillar.

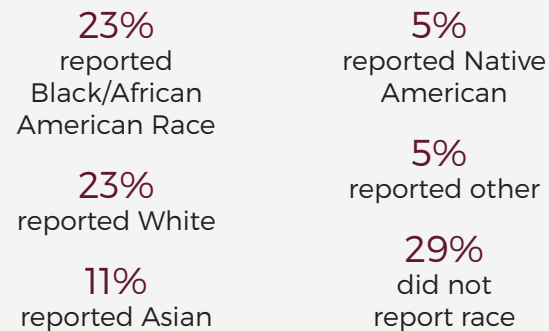
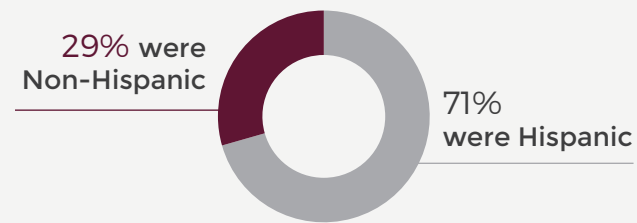
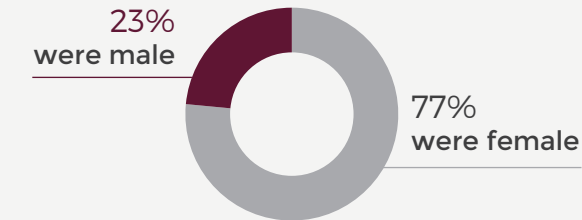
Annually, the Foundation provides academic scholarships to student leaders focused on advancing and supporting their communities. The scholarship is open to students that are pursuing Bachelor's, Master's, or Doctoral degrees. The Foundation is grateful to support the academic pursuits of future leaders as they continue their education for the ultimate advancement of the communities. This year we have awarded 17 scholarships to students pursuing a range of academic areas ranging from medicine to social work. We are proud of their accomplishments thus far, and look forward to their continued success as leaders in their communities. Historically, the Foundation's Scholarship program has been ongoing since 2017 and we have awarded 85 scholarships in total.



# APPLICANT STATISTICS

## APPLICANT STATISTICS

**Total 147 eligible submissions**  
Below are stats on the applicants



## RECIPIENT STATISTICS

### Areas of Study

- Pre-medicine, Nursing,
- Movement Science, Medicine,
- Psychology,
- Kinesiology,
- Business,
- Pharmacy,
- Organizational leadership,
- Public Health, Education,
- Occupational Therapy,
- Engineering

### Educational Category

- 5 HS
- 4 Undergraduate
- 4 Graduate / Masters
- 4 Doctoral

### 17 recipients were Chosen:

- Winner States (i.e.: AZ-2, CA-3)
- CA - 4    ■ GA - 2    ■ OH - 1
- TX - 1    ■ IL-2    ■ VA - 1
- CO-1    ■ NJ - 3
- CT - 1    ■ NY - 1



# 2021 LAMBDA THETA ALPHA FOUNDATION SCHOLARSHIP RECIPIENTS



**Ximena Casillas**  
NYU  
HS



**Zaire Profit**  
St Lukes  
HS



**Kahleil Lamarque**  
Brooklyn College  
HS



**Karina Diaz**  
Rutgers  
HS



**Angelica Segura**  
U Mich  
Undergraduate



**Ashley Martinez**  
U Mich  
Undergraduate



**Cristina Calixto**  
Trenton State College  
Undergraduate



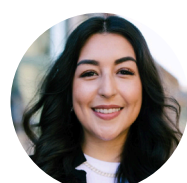
**Jacquelin Andrade**  
Santa Ana College  
Undergraduate



**Justin Augustin**  
Rutgers  
Undergraduate



**Juliana Kinsolving**  
Drexel University  
Graduate



**Katherine Arreola**  
UC Berkeley  
Graduate



**Pilar Marin**  
Berkeley  
Graduate



**Savannah Burrup**  
ATSU  
Graduate



**Bianka Martin**  
UC Riverside  
Doctoral



**Kathy Nguyen**  
U Texas  
Doctoral



**Nury Castro**  
U Dayton  
Doctoral



**Rodney Stanley**  
UGA  
Doctoral

# MARQUEE ANNUAL EVENT

## 1.975 RUN

The year 2020 saddled all of us with the dual pandemics of COVID-19 and racial injustice. Many were left feeling tired and depleted. Our 2021 Annual 1.975 Run was an opportunity for us to remind the community just how resilient we are. The definition of resilient is to be able to withstand or recover quickly from difficult conditions. We know our community and supporters are resilient. We had a total of 130

runners across 8 teams and 227 donors. The 1.975 Run: Road to Resilience raised \$15,220. The Foundation elected to donate a portion of the funds raised to organizations that have supported our communities on their road to resilience. We donated a total of \$8,900 to the following organizations: Latino Resource Organization, Asian Americans Advancing Justice-ATL, Campaign Zero, and Girls on the Run-DC.



**Karol M.**, member of the Alpha Delta Alumnae Chapter of Lambda Theta Alpha Latin Sorority, Inc. after completing their run.

# GIVING TUESDAY

Annually the Foundation unites supporters, on Giving Tuesday, to donate hours or dollars to those in need. The 2021 campaign raised over \$500 and 25 hours of collective service. In light of our theme this year, we would like to highlight those who donated the highest number of hours and dollars, as putting others first during our current climate is not an easy feat.



## TOP VOLUNTEER

Dr. Cecilia Suarez

Lambda Theta Alpha National Board Member who donated 20 hours in support of the Hispanic Latinx Affairs organization at the University of Florida! Donating her time outside of work to forward the goals of upcoming young professionals of the Latin community!

*"I never would have imagined that this little brown girl from Texas would now be 'Doctora'. As a first-generation college student, my mother and grandmother sacrificed everything so that I may help pave the way for our family & achieve my potential. They are my GIANTS...always lifting me up to see farther than they have. Ubuntu: I am because they are.*

*They are the reason I fundraise for and believe in this Foundation. I hope to be able to support others to see further than me. May my efforts be the shoulders for others to stand on."*

# TOP FUNDRAISER



Ofelia Oviedo

Lambda Theta Alpha Founding Mother donated \$75 to the campaign, and as one of our recurring top supporters we are always and extremely thankful for her dedication to the Foundation for every campaign or event we host! Ofelia's donation also supported the top fundraising group, which includes members of our partner, Lambda Theta Alpha Sorority, Inc.

*"Giving to the LTA Foundation is continuing our dedication to the community; to helping when needed; to promoting educational excellence. It is who we are."*



Kenya Woods

Lambda Theta Alpha Member who donated \$30, was the highest fundraiser outside of the top fundraising group and we are extremely grateful for her support in this campaign as well as the many others she has engaged with!

*"I chose the LTA foundation to support during the Giving Tuesday Campaign because it's a Foundation that provides true unity to so many and chooses unity of people over segregation of each other and that means a lot to me. We should support everyone we can, especially those like your Foundation which is full of dedicated individuals working hard to be about something and offer support to people who need help."*

# TOP GROUP FUNDRAISER



Finally, we had tremendous support from the Lambda Theta Alpha North Central Region Group, a member of our Partner, the Lambda Theta Alpha Sorority! This group included 20 individuals dedicated to rebuilding our community and provided us with over \$400 dollars to execute our mission!

We are always extremely grateful for the support we receive! Every dollar donated and every volunteer hour recorded are another means to support those who need it most, and we are grateful for your continued belief in what we do.

*"We chose to support the Lambda Theta Alpha Foundation for Giving Tuesday because we believe in its mission. We directly know individuals who have been supported by their work and want to ensure they're able to do more in the future."*

## PARTNERSHIPS

Throughout 2021, the Foundation continued to strengthen our partnership with the Lambda Theta Alpha Latin Sorority, Inc.. (“Sorority” or “Partner”) and had another successful year with their support! Members of our Partner donated or volunteered on our behalf all throughout 2021 and we are grateful for their dedication to the Foundation even as they continued to rebuild their own lives following 2020. One of the largest displays of our partnership occurred at the Virtual National Convention hosted by the Lambda Theta Alpha Latin Sorority, Inc.

The Sorority and its members donated over \$25,000 in 2021, which included donations made through various campaigns hosted by either the Foundation or the Sorority, as well as initiatives created directly by the members of the Sorority! We cannot express enough gratitude for the decision of the Sorority and its members to choose us as the organization they support year after year! We will continue to strive for a better tomorrow with their help and dedication.

During the Sorority’s Annual National Convention, the Sorority made space for the Foundation to not only discuss our efforts as an organization but also present the winners of our annual Scholarship who were also members of the Sorority. This year we had 6 of the 17 recipients who were members of Lambda Theta Alpha Sorority, Inc. During convention the Sorority also dedicated time away from their scheduled programming to allow their members to participate in our Annual 1.975 Virtual Run/Walk!

## PARTNER DONATION RECOGNITION

### Top Donors

As a non-profit organization partnerships and individual or group donors provide the means by which we can execute our mission of uplifting communities for those who need it most. Below is recognition of the individuals and groups within the Lambda Theta Alpha Latin Sorority, Inc. organization who have taken on our missions as their own!

### HIGHEST GROUP DONORS

Alpha Phi Alumnae Chapter	\$1,000.00
Gamma Mu Chapter	\$946.29
Gamma Eta Chapter	\$581.00

### HIGHEST INDIVIDUAL DONORS (Non-LTA Foundation Board Affiliates)

Vanessa Madrazo	\$1,000.00
Adlemi Venegas	\$812.92
Alexi Gaetan	\$628.02

## FINANCIAL SUMMARY

Donations	\$39,330
Event Income	15,930
Merchandise Sales	2,300
<b>Total Income</b>	<b>\$57,560</b>
Donated Funds	\$32,100
Event Expenses	4,900
Operating Expenses	5,800
<b>Total Expenses</b>	<b>\$42,800</b>
<b>Net Income</b>	<b>\$14,760</b>



### Quote from Partner President

“Lambda Theta Alpha was pleased to formally recognize the Lambda Theta Alpha Foundation as a National Philanthropy this year as a result of our deepened collaboration during these unprecedented times. The foundation’s mission of advancing the community through educational programming, higher education scholarships and humanitarian relief, continues to resonate with our members. This partnership has truly allowed us to make a difference in the lives of those we care about the most in our communities.”

**Alexis L. Degraffenreid**

2020-2022 Lambda Theta Alpha National President

# DONOR RECOGNITION

## Tier 2 Donors

- Alma Sida
- Arthur Brown
- Candice Ahwah Gonzalez
- Cynthia Alvarez
- Dianna Romaguera
- Lambda Theta Alpha - Gamma Omicron Chapter
- Lambda Theta Alpha - Gamma Xi Chapter
- Iris Rodriguez
- Jazmin Castro-Madriral
- Jessica Alvarez
- Krystal Mendez
- Liz Beth Sanchez
- Liz Lizama
- Maria Elena Ornelas
- Milena Orozco
- Nathalie Canadas
- Rosie Flowers
- Rossy Francisco
- Stephanie Carrillo Higlesia
- Tiffany Vega-Gibson
- Vanessa Morales

## Tier 3 Donors

- Adlemi Venegas
- Alexi Gaetan
- Amber Bolden
- Brittany Rich
- Damaris Garcia
- Denise Vidot
- Lambda Theta Alpha - Gamma Eta Chapter
- Jenna Ortiz
- Jessica Islam
- Lambda Theta Alpha - Gamma Mu Chapter
- Ofelia Oviedo

## Tier 4 Donors

- Lambda Theta Alpha - Alpha Phi Alumnae Chapter
- Carmen Valencia
- Merlix Reynolds
- Vanessa Madrazo

# MESSAGE TO OUR DONORS FROM THE FOUNDATION BOARD

In 2021 The Lambda Theta Alpha Foundation emphasized the importance of preventative measures and staying educated in lieu of 2020, a year that completely disrupted our lives. We continue to answer the call to advance and support our communities as far as our resources allow us.

Our mission is rooted in community support and empowerment as we utilize our resources to uplift those seeking higher education, care for those affected by humanitarian disasters, and extend support to those who go out and do good in their communities. We are so grateful for our supporters, friends, families, and communities who continue to support our mission throughout 2022 and years to come.